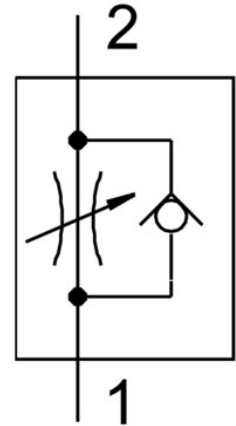


Precision one-way flow control valve GRP-160-1/8-AL

Part number: 542023

FESTO



Data sheet

Feature	Value
Type code	GRP
Valve function	Flow control non-return function
Pneumatic connection 1	G1/8
Pneumatic connection 2	G1/8
Actuation type	Manual
Adjusting element	Rotary knob with scale
Type of mounting	On sub-base
Standard nominal flow rate in flow control direction	75.8 l/min
Standard nominal flow rate in non-return direction	245 l/min
Operating pressure	0 bar ... 8 bar
Ambient temperature	-10 °C ... 50 °C
Housing material	PA-reinforced
Mounting position	Any
Symbol	00991453
Operating pressure from 2 to 1	0 bar ... 8 bar
Standard nominal flow rate in flow control direction from 1bar to 0 bar	38 l/min
Standard nominal flow rate in non-return direction from 1 bar to 0 bar	25 l/min ... 90 l/min
Standard flow rate in flow control direction 6 -> 0 bar	129 l/min
Standard flow rate in non-return direction at 6 -> 0 bar	245 l/min
Operating medium	Compressed air as per ISO 8573-1:2010 [5:4:3] Inert gas
Information on operating and pilot media	Operation with oil lubrication not possible
Temperature of medium	-10 °C ... 50 °C
Product weight	110 g
Note on materials	Contains paint-wetting impairment substances RoHS-compliant
Material of sub-base	Wrought aluminum alloy
Seals material	NBR PVC

Feature	Value
Material of screws	Steel